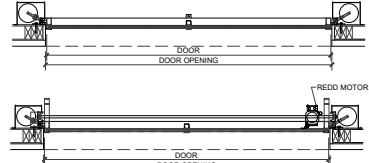




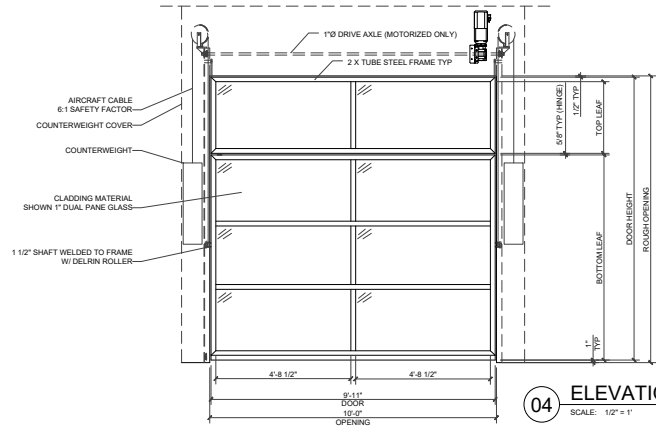
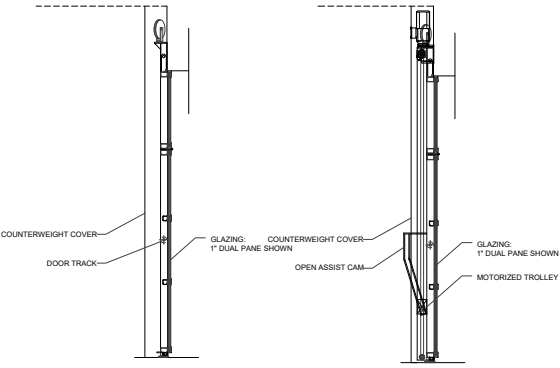
03 DOOR JAMB NON-MOTORIZED
SCALE: 1-1/2" = 1'



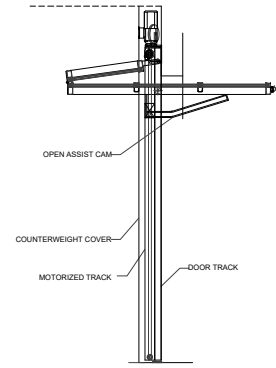
02 DOOR PLAN MOTORIZED & NON
SCALE: 1/2" = 1'



01 DOOR JAMB MOTORIZED
SCALE: 1-1/2" = 1'

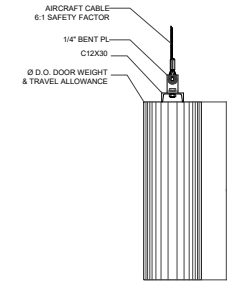


04 ELEVATION & SECTIONS MOTORIZED & NON
SCALE: 1/2" = 1'

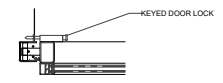


GLAZING OPTIONS:
1/4" to 1" POLYCARBONATE
1/4" to 1" LAMINATED
1/4" to 1" TEMPERED
1" INSULATED

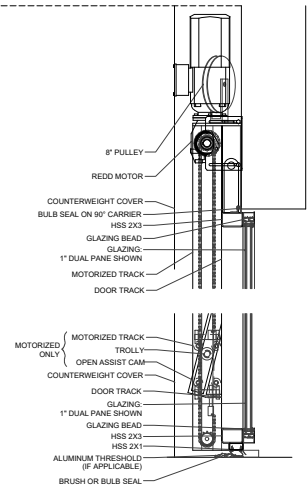
COLOR / FINISH OPTIONS:
CUSTOM COLOR MATCHING
CUSTOM CLADDING
POWDER COATING
GALVANIZED



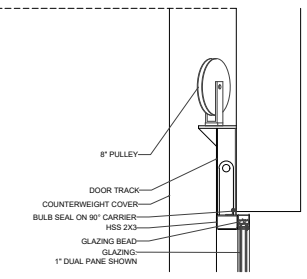
08 COUNTERWEIGHT TYP
SCALE: 1-1/2" = 1'



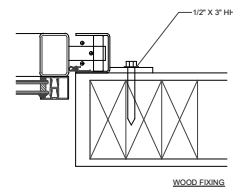
09 LOCK TYP (MANUAL ONLY)
SCALE: 1-1/2" = 1'



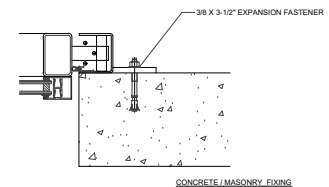
06 DOOR HEAD - SILL TYP
SCALE: 1-1/2" = 1'



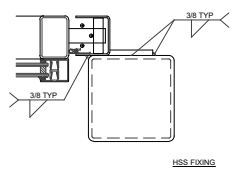
05 DOOR HEAD NON-MOTORIZED
SCALE: 1-1/2" = 1'



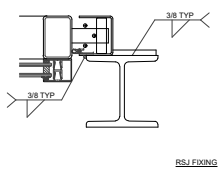
WOOD FIXING



CONCRETE / MASONRY FIXING



HSS FIXING



BSJ FIXING

07 FIXING DETAILS TYP
SCALE: 3" = 1'

DISCLAIMER:
THE DESIGNS AND DETAILS HEREIN ARE THE PROPERTY OF FULL VIEW DOOR COMPANY. USE IS GRANTED FOR THE SOLE PURPOSE OF INTEGRATION OF OUR PRODUCT INTO YOUR PROJECT. DRAWINGS ARE TYPICAL IN NATURE AND FOR REFERENCE ONLY, AND SHOULD BE REGRASSED AS SUCH DUE TO THE CUSTOM NATURE OF OUR PRODUCT SPECIFIC CONFIGURATIONS AND DIMENSIONS MAY VARY.

Full View Door Company
121 Main Ave.
Sacramento, CA 9538
Phone: 866-890-1776
www.fullviewdoorcompany.com

| | |
|-----------------|----------------------|
| Project No. | Issue - Reverse Fold |
| Client | |
| Issue Date | |
| Issue Rev. Date | |
| Drawn By: JDC | |
| Drawing No. | 2K |