



DEPARTMENT OF REGULATORY AND ECONOMIC RESOURCES (RER)  
BOARD AND CODE ADMINISTRATION DIVISION

## NOTICE OF ACCEPTANCE (NOA)

MIAMI-DADE COUNTY  
PRODUCT CONTROL SECTION

11805 SW 26 Street, Room 208  
Miami, Florida 33175-2474  
T (786) 315-2590 F (786) 315-2599

[www.miamidade.gov/economy](http://www.miamidade.gov/economy)

**Renlita Doors North America, LLC**  
**P.O. Box B**  
**Bonham, TX 75418**

**SCOPE:** This NOA is being issued under the applicable rules and regulations governing the use of construction materials. The documentation submitted has been reviewed and accepted by Miami-Dade County RER-Product Control Section to be used in Miami Dade County and other areas where allowed by the Authority Having Jurisdiction (AHJ).

This NOA shall not be valid after the expiration date stated below. The Miami-Dade County Product Control Section (In Miami Dade County) and/or the AHJ (in areas other than Miami Dade County) reserve the right to have this product or material tested for quality assurance purposes. If this product or material fails to perform in the accepted manner, the manufacturer will incur the expense of such testing and the AHJ may immediately revoke, modify, or suspend the use of such product or material within their jurisdiction. RER reserves the right to revoke this acceptance if it is determined by Miami-Dade County Product Control Section that this product or material fails to meet the requirements of the applicable building code.

This product is approved as described herein and has been designed to comply with the Florida Building Code, including the High Velocity Hurricane Zone.

**DESCRIPTION: Model S-1000 Floataway Steel and Glass Pivoted Garage Door up to 17'-11" Wide x 8'-10 1/4" High**

**APPROVAL DOCUMENT:** Drawing No. **1K-MIAMI**, titled "s-1000 Floataway Miami-Dade", sheets 1 through 11 of 11, dated 09/16/2016, with revision 3 dated 07/08/2020, prepared by Renlita Doors North America, LLC, signed and sealed by John F. Bonacci, P.E., bearing the Miami-Dade County Product Control approval stamp with the Notice of Acceptance number and approval date by the Miami-Dade County Product Control Section.

**MISSILE IMPACT RATING: Large and Small Missile Impact Resistant**

**LABELING:** A permanent label with the manufacturer's name or logo, manufacturing address, model number, the positive and negative design pressure rating, indicate impact rated if applicable, installation instruction drawing reference number, approval number (NOA), the applicable test standards, and the statement reading 'Miami-Dade County Product Control Approved' is to be located on the door's side track, bottom angle, or inner surface of a panel.

**RENEWAL** of this NOA shall be considered after a renewal application has been filed and there has been no change in the applicable building code negatively affecting the performance of this product.

**TERMINATION** of this NOA will occur after the expiration date or if there has been a revision or change in the materials, use, and/or manufacture of the product or process. Misuse of this NOA as an endorsement of any product, for sales, advertising or any other purposes shall automatically terminate this NOA. Failure to comply with any section of this NOA shall be cause for termination and removal of NOA.

**ADVERTISEMENT:** The NOA number preceded by the words Miami-Dade County, Florida, and followed by the expiration date may be displayed in advertising literature. If any portion of the NOA is displayed, then it shall be done in its entirety.

**INSPECTION:** A copy of this entire NOA shall be provided to the user by the manufacturer or its distributors and shall be available for inspection at the job site at the request of the Building Official.

This NOA consists of this page 1 and evidence page E-1, as well as approval document mentioned above.

The submitted documentation was reviewed by **Carlos M. Utrera, P.E.**



**NOA No 20-0526.06**  
**Expiration Date: August 27, 2025**  
**Approval Date: August 27, 2020**  
**Page 1**

**NOTICE OF ACCEPTANCE: EVIDENCE SUBMITTED**

**A. DRAWINGS**

1. Drawing No. **1K-MIAMI**, titled “s-1000 Floataway Miami-Dade”, sheets 1 through 11 of 11, dated 09/16/2016, with revision 3 dated 07/08/2020, prepared by Renlita Doors North America, LLC, signed and sealed by John F. Bonacci, P.E.

**B. TESTS**

1. Test reports on 1) Air Infiltration Test, per FBC, TAS 202-94  
2) Uniform Static Air Pressure Test, Loading per FBC TAS 202-94  
3) Large Missile Impact Test per FBC, TAS 201-94  
4) Cyclic Wind Pressure Loading per FBC, TAS 203-94  
5) Forced Entry Test, per FBC, TAS 202-94  
along with marked-up drawings and installation diagram of 18’x 8’-10” S1000 Operable Curtain Wall, prepared by Intertek, Test Report No. **J5111.01-801-18R2**, dated 10/01/2019, with revision dated 07/16/2020, signed and sealed by Tyler Westerling, P.E.

**C. CALCULATIONS**

1. Structural steel calculations and static wind pressure analysis prepared by Karins Engineering Group, Inc., dated 04/15/2020, signed and sealed by John F. Bonacci, P.E.

**D. QUALITY ASSURANCE**

1. Miami-Dade Department of Regulatory and Economic Resources (RER)

**E. MATERIAL CERTIFICATIONS**

1. Notice of Acceptance No. 17-0808.02 issued to Kuraray America, Inc. for their SentryGlas® (Clear and White) Glass Interlayers, dated on 12/28/2017, expiring on 07/04/2023.

**F. STATEMENTS**

1. Statement letter of code conformance to the **FBC 6<sup>th</sup> Edition (2017)** and of no financial interest, issued by Karins Engineering Group, Inc., dated 04/30/2020, signed and sealed by John F. Bonacci, P.E.

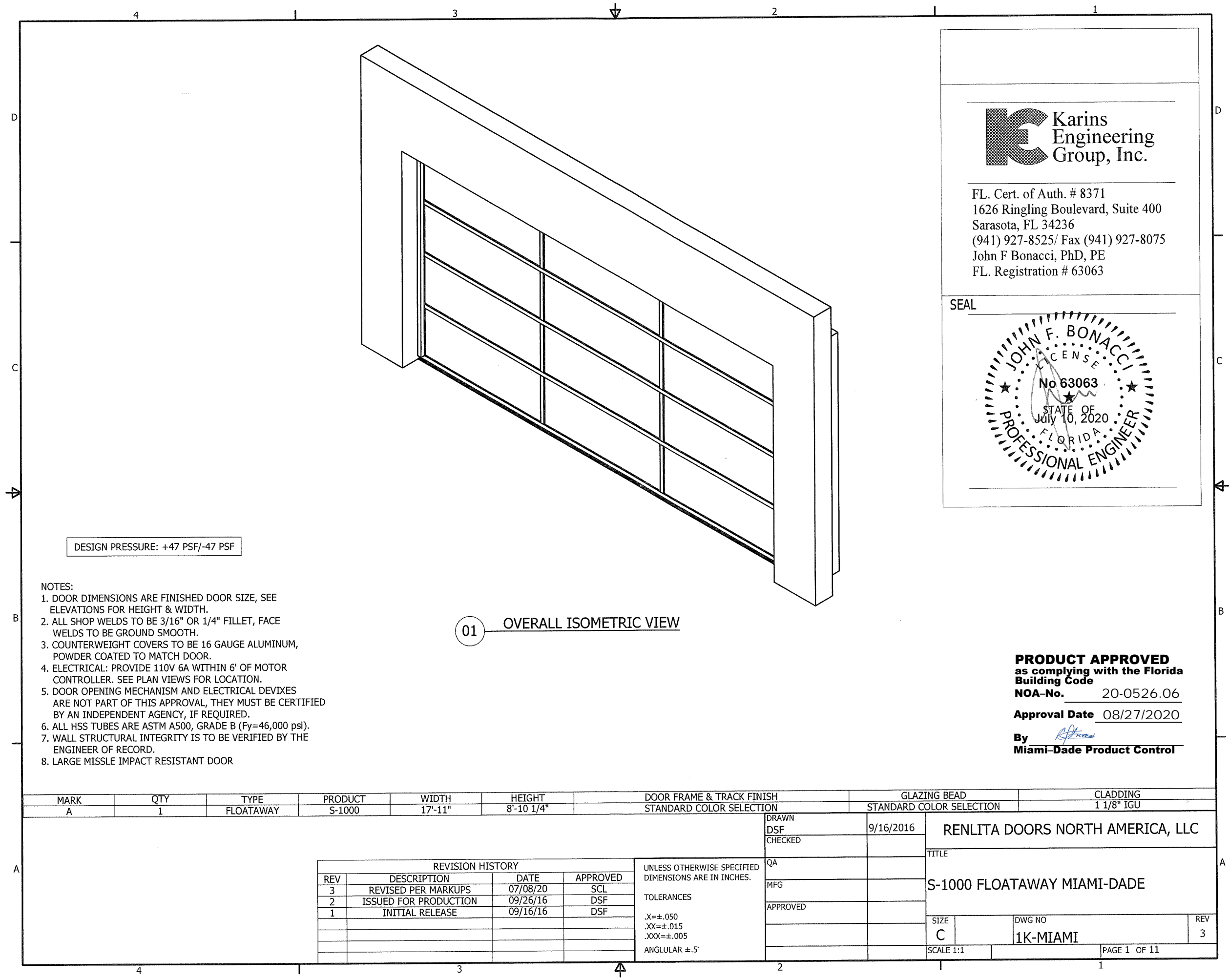
**G. OTHERS**

1. None.



---

**Carlos M. Utrera, P.E.**  
**Product Control Examiner**  
**NOA No 20-0526.06**  
**Expiration Date: August 27, 2025**  
**Approval Date: August 27, 2020**



DESIGN PRESSURE: +47 PSF/-47 PSF

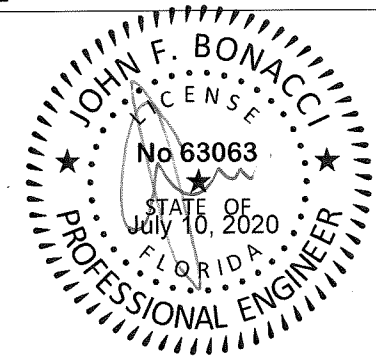
- NOTES:
- 1. DOOR DIMENSIONS ARE FINISHED DOOR SIZE, SEE ELEVATIONS FOR HEIGHT & WIDTH.
  - 2. ALL SHOP WELDS TO BE 3/16" OR 1/4" FILLET, FACE WELDS TO BE GROUND SMOOTH.
  - 3. COUNTERWEIGHT COVERS TO BE 16 GAUGE ALUMINUM, POWDER COATED TO MATCH DOOR.
  - 4. ELECTRICAL: PROVIDE 110V 6A WITHIN 6' OF MOTOR CONTROLLER. SEE PLAN VIEWS FOR LOCATION.
  - 5. DOOR OPENING MECHANISM AND ELECTRICAL DEVIXES ARE NOT PART OF THIS APPROVAL, THEY MUST BE CERTIFIED BY AN INDEPENDENT AGENCY, IF REQUIRED.
  - 6. ALL HSS TUBES ARE ASTM A500, GRADE B (Fy=46,000 psi).
  - 7. WALL STRUCTURAL INTEGRITY IS TO BE VERIFIED BY THE ENGINEER OF RECORD.
  - 8. LARGE MISSLE IMPACT RESISTANT DOOR

01 OVERALL ISOMETRIC VIEW



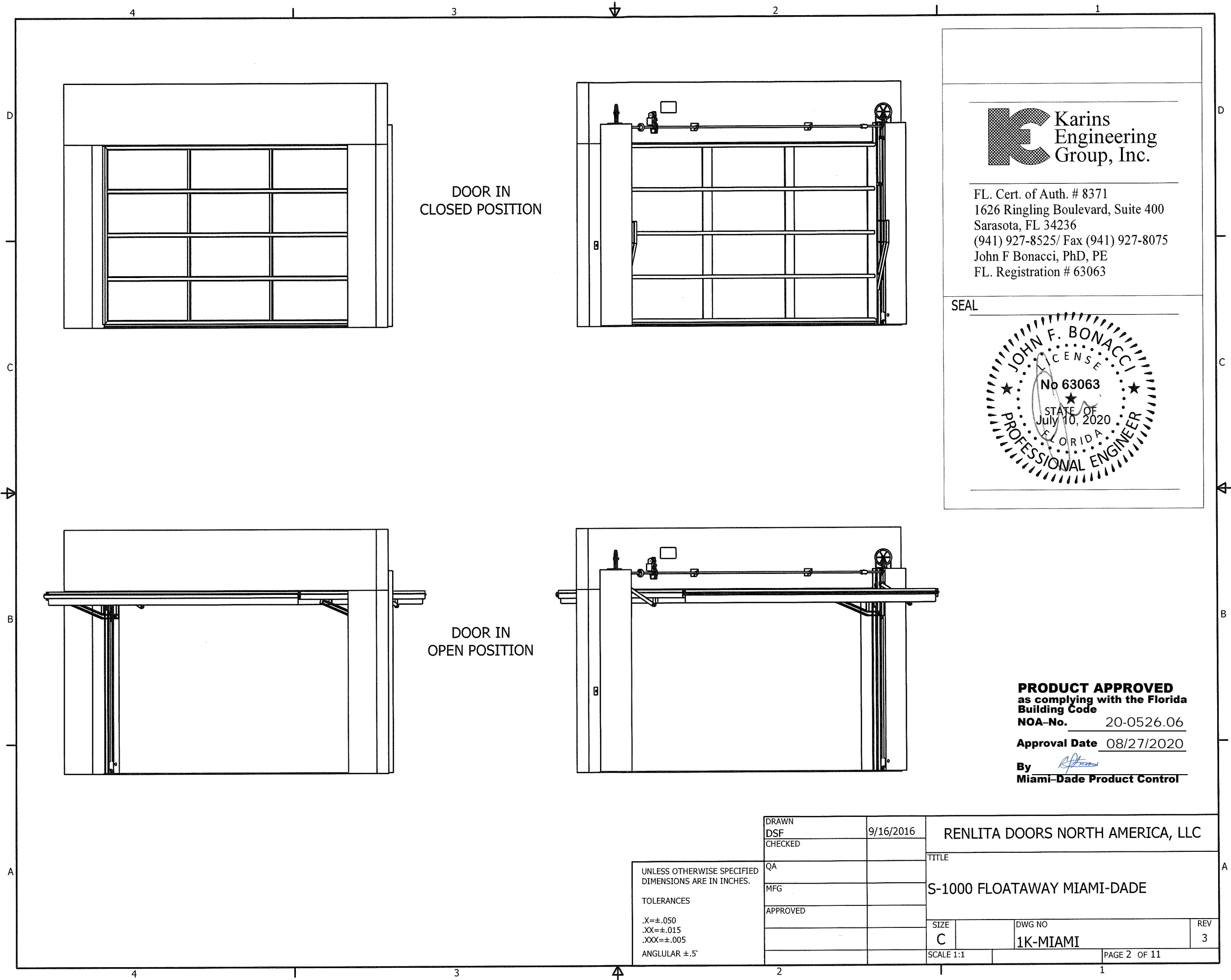
FL. Cert. of Auth. # 8371  
1626 Ringling Boulevard, Suite 400  
Sarasota, FL 34236  
(941) 927-8525/ Fax (941) 927-8075  
John F Bonacci, PhD, PE  
FL. Registration # 63063

SEAL



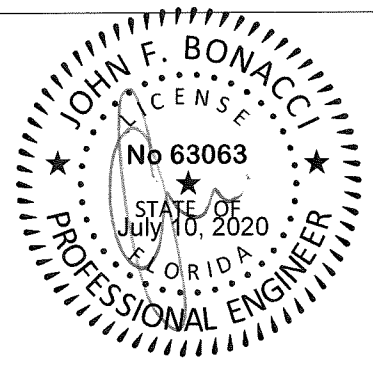
**PRODUCT APPROVED**  
as complying with the Florida  
Building Code  
**NOA-No.** 20-0526.06  
**Approval Date** 08/27/2020  
**By**   
**Miami-Dade Product Control**

MARK	QTY	TYPE	PRODUCT	WIDTH	HEIGHT	DOOR FRAME & TRACK FINISH	GLAZING BEAD	CLADDING																																										
A	1	FLOATAWAY	S-1000	17'-11"	8'-10 1/4"	STANDARD COLOR SELECTION	STANDARD COLOR SELECTION	1 1/8" IGU																																										
<table><tr><th colspan="4">REVISION HISTORY</th></tr><tr><th>REV</th><th>DESCRIPTION</th><th>DATE</th><th>APPROVED</th></tr><tr><td>3</td><td>REVISED PER MARKUPS</td><td>07/08/20</td><td>SCL</td></tr><tr><td>2</td><td>ISSUED FOR PRODUCTION</td><td>09/26/16</td><td>DSF</td></tr><tr><td>1</td><td>INITIAL RELEASE</td><td>09/16/16</td><td>DSF</td></tr><tr><td> </td><td> </td><td> </td><td> </td></tr><tr><td> </td><td> </td><td> </td><td> </td></tr><tr><td> </td><td> </td><td> </td><td> </td></tr><tr><td> </td><td> </td><td> </td><td> </td></tr><tr><td> </td><td> </td><td> </td><td> </td></tr></table>						REVISION HISTORY				REV	DESCRIPTION	DATE	APPROVED	3	REVISED PER MARKUPS	07/08/20	SCL	2	ISSUED FOR PRODUCTION	09/26/16	DSF	1	INITIAL RELEASE	09/16/16	DSF																					DRAWN	9/16/2016	RENLITA DOORS NORTH AMERICA, LLC		
						REVISION HISTORY																																												
						REV	DESCRIPTION	DATE	APPROVED																																									
						3	REVISED PER MARKUPS	07/08/20	SCL																																									
						2	ISSUED FOR PRODUCTION	09/26/16	DSF																																									
						1	INITIAL RELEASE	09/16/16	DSF																																									
DSF																																																		
CHECKED																																																		
<table><tr><td colspan="4">UNLESS OTHERWISE SPECIFIED DIMENSIONS ARE IN INCHES.</td></tr><tr><td colspan="4">TOLERANCES</td></tr><tr><td colspan="4">.X=±.050</td></tr><tr><td colspan="4">.XX=±.015</td></tr><tr><td colspan="4">.XXX=±.005</td></tr><tr><td colspan="4">ANGULAR ±.5°</td></tr></table>						UNLESS OTHERWISE SPECIFIED DIMENSIONS ARE IN INCHES.				TOLERANCES				.X=±.050				.XX=±.015				.XXX=±.005				ANGULAR ±.5°				QA		TITLE  S-1000 FLOATAWAY MIAMI-DADE																		
						UNLESS OTHERWISE SPECIFIED DIMENSIONS ARE IN INCHES.																																												
						TOLERANCES																																												
						.X=±.050																																												
						.XX=±.015																																												
.XXX=±.005																																																		
ANGULAR ±.5°																																																		
MFG																																																		
APPROVED																																																		
								SIZE		DWG NO		REV	3																																					
						C		1K-MIAMI																																										
						SCALE 1:1		PAGE 1 OF 11																																										



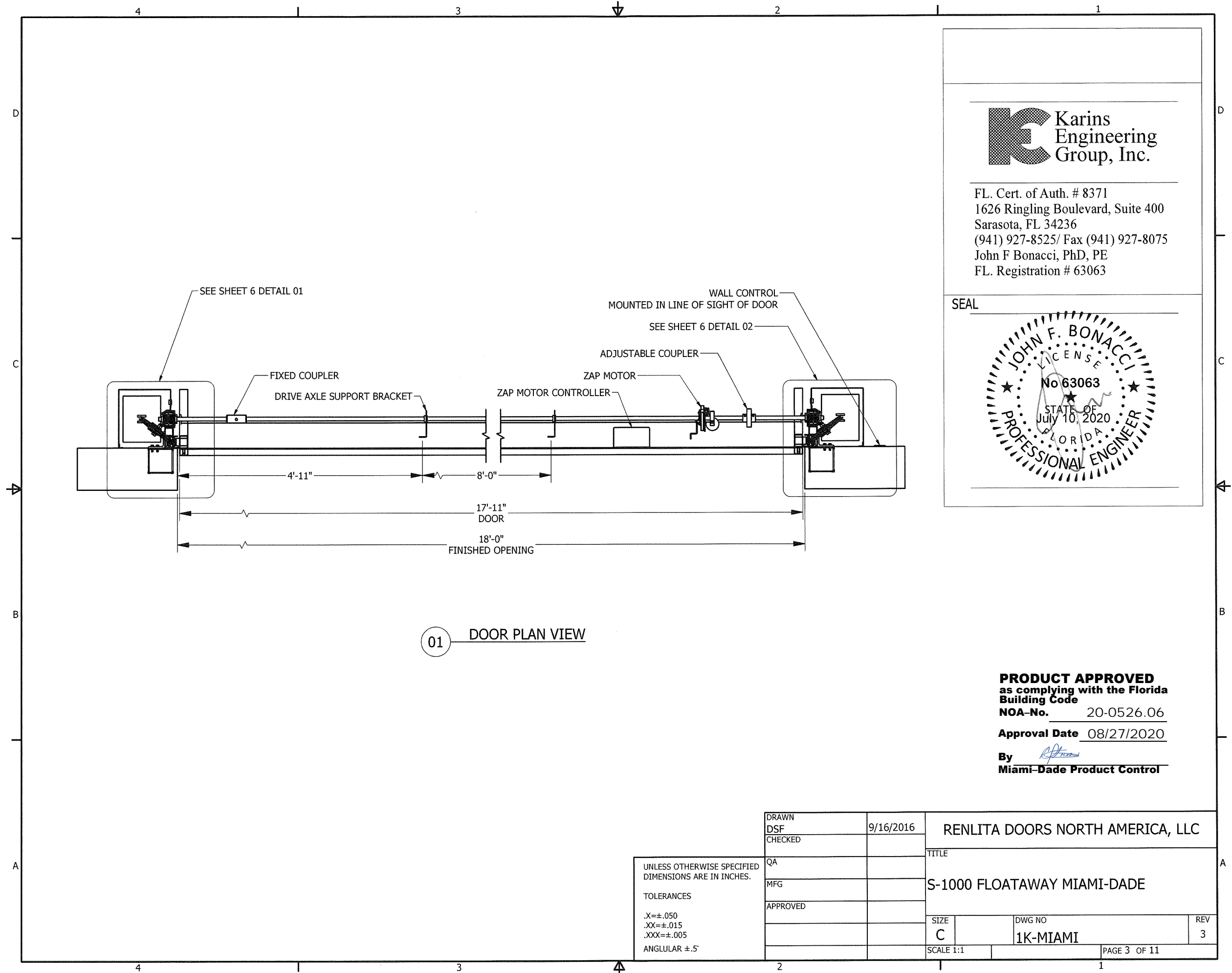
FL. Cert. of Auth. # 8371  
1626 Ringling Boulevard, Suite 400  
Sarasota, FL 34236  
(941) 927-8525/ Fax (941) 927-8075  
John F Bonacci, PhD, PE  
FL. Registration # 63063

SEAL

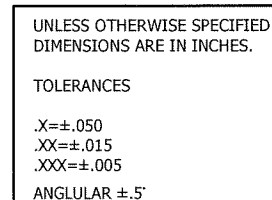


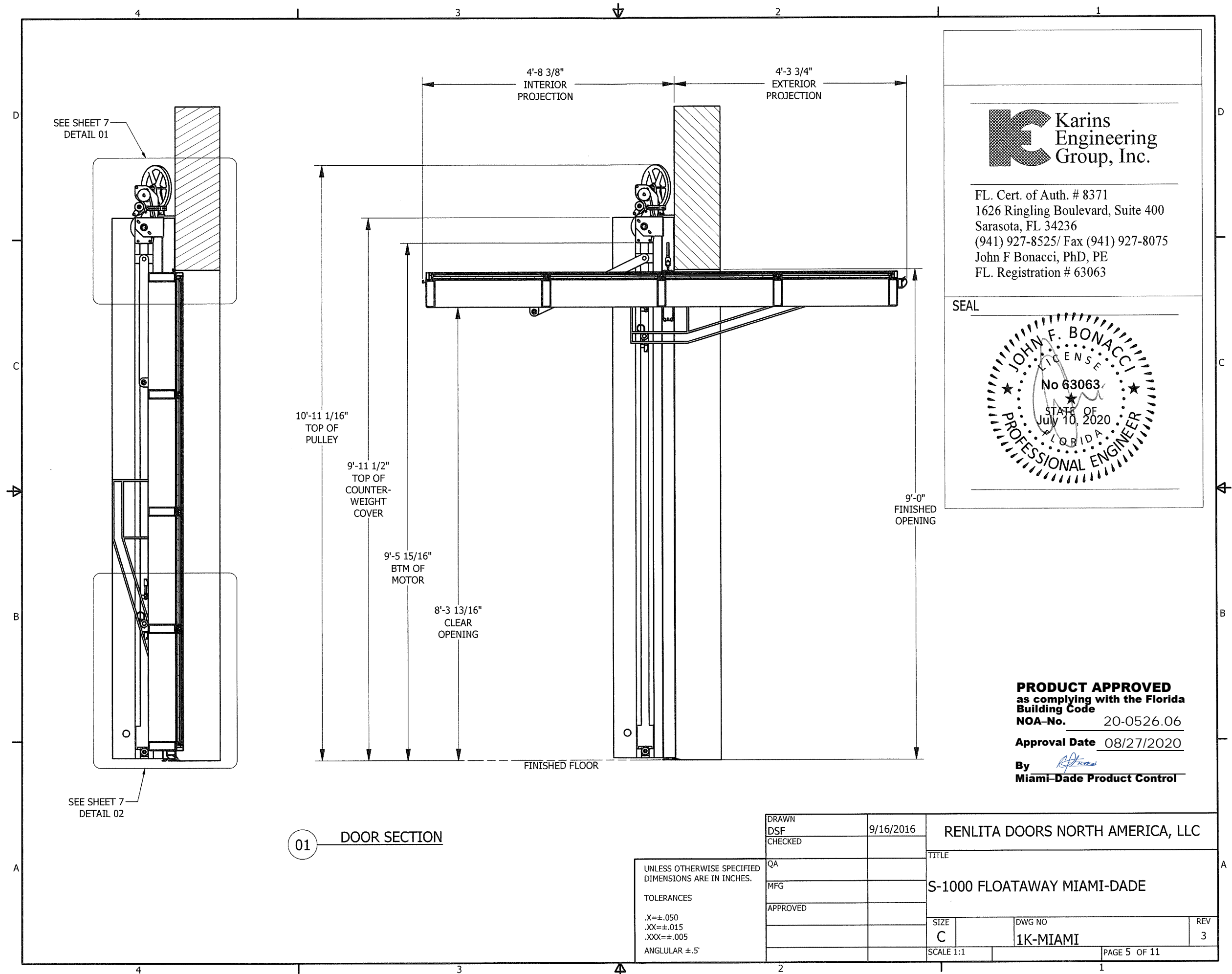
**PRODUCT APPROVED**  
as complying with the Florida  
Building Code  
NOA-No. 20-0526.06  
Approval Date 08/27/2020  
By *[Signature]*  
Miami-Dade Product Control

UNLESS OTHERWISE SPECIFIED DIMENSIONS ARE IN INCHES.  TOLERANCES  .X=±.050 .XX=±.015 .XXX=±.005  ANGULAR ±.5°	DRAWN	9/16/2016	RENLITA DOORS NORTH AMERICA, LLC	
	DSF		TITLE	
	CHECKED		S-1000 FLOATAWAY MIAMI-DADE	
	QA		SIZE	DWG NO
	MFG		C	1K-MIAMI
	APPROVED		SCALE 1:1	REV 3
			PAGE 2 OF 11	





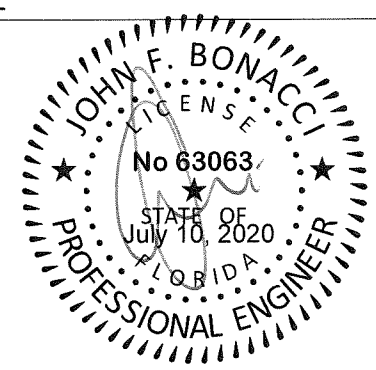




**Karins Engineering Group, Inc.**

FL. Cert. of Auth. # 8371  
 1626 Ringling Boulevard, Suite 400  
 Sarasota, FL 34236  
 (941) 927-8525/ Fax (941) 927-8075  
 John F Bonacci, PhD, PE  
 FL. Registration # 63063

SEAL



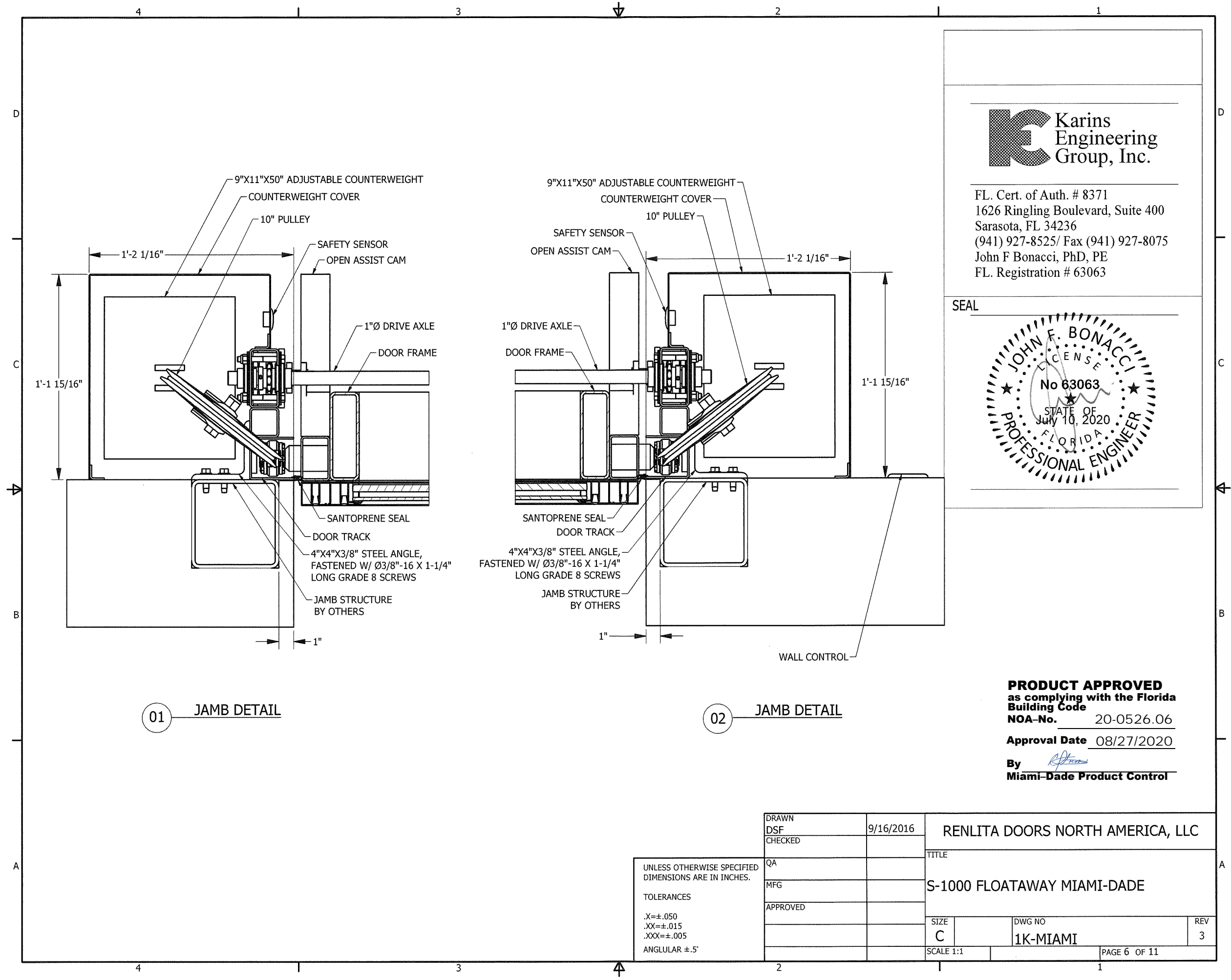
**PRODUCT APPROVED**  
 as complying with the Florida  
 Building Code  
 NOA-No. 20-0526.06  
 Approval Date 08/27/2020  
 By *[Signature]*  
 Miami-Dade Product Control

01 DOOR SECTION

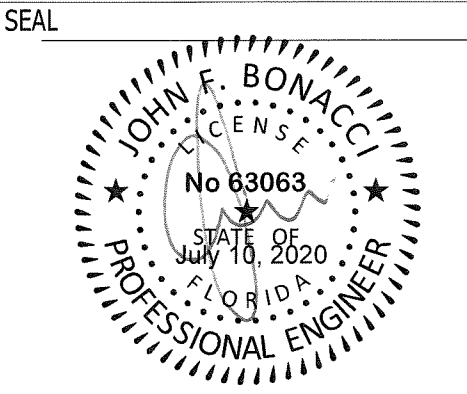
UNLESS OTHERWISE SPECIFIED  
 DIMENSIONS ARE IN INCHES.

TOLERANCES  
 .X=±.050  
 .XX=±.015  
 .XXX=±.005  
 ANGULAR ±.5°

DRAWN	DSF	9/16/2016	RENLITA DOORS NORTH AMERICA, LLC	
CHECKED			TITLE	
QA			S-1000 FLOATAWAY MIAMI-DADE	
MFG				
APPROVED				
			SIZE	DWG NO
			C	1K-MIAMI
			SCALE 1:1	PAGE 5 OF 11
				REV 3



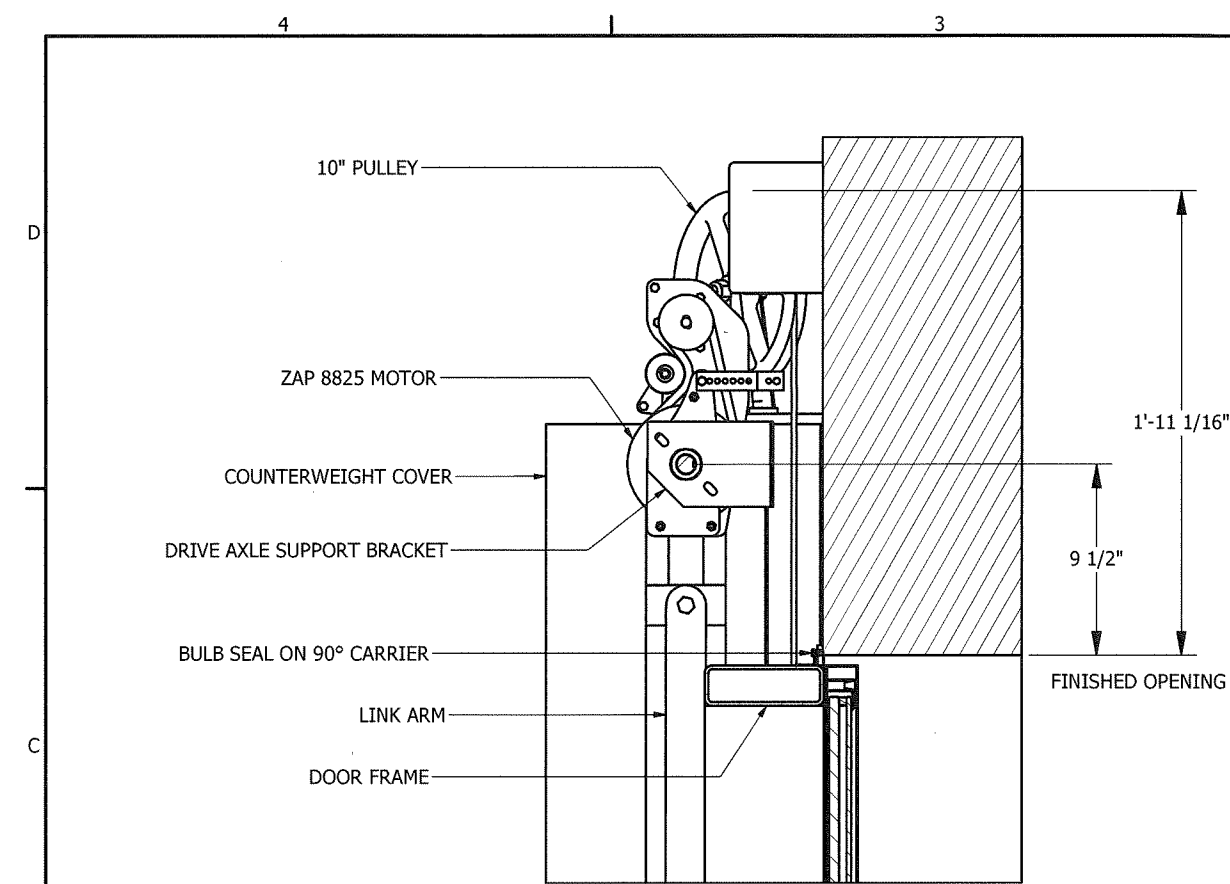
FL. Cert. of Auth. # 8371  
1626 Ringling Boulevard, Suite 400  
Sarasota, FL 34236  
(941) 927-8525/ Fax (941) 927-8075  
John F Bonacci, PhD, PE  
FL. Registration # 63063



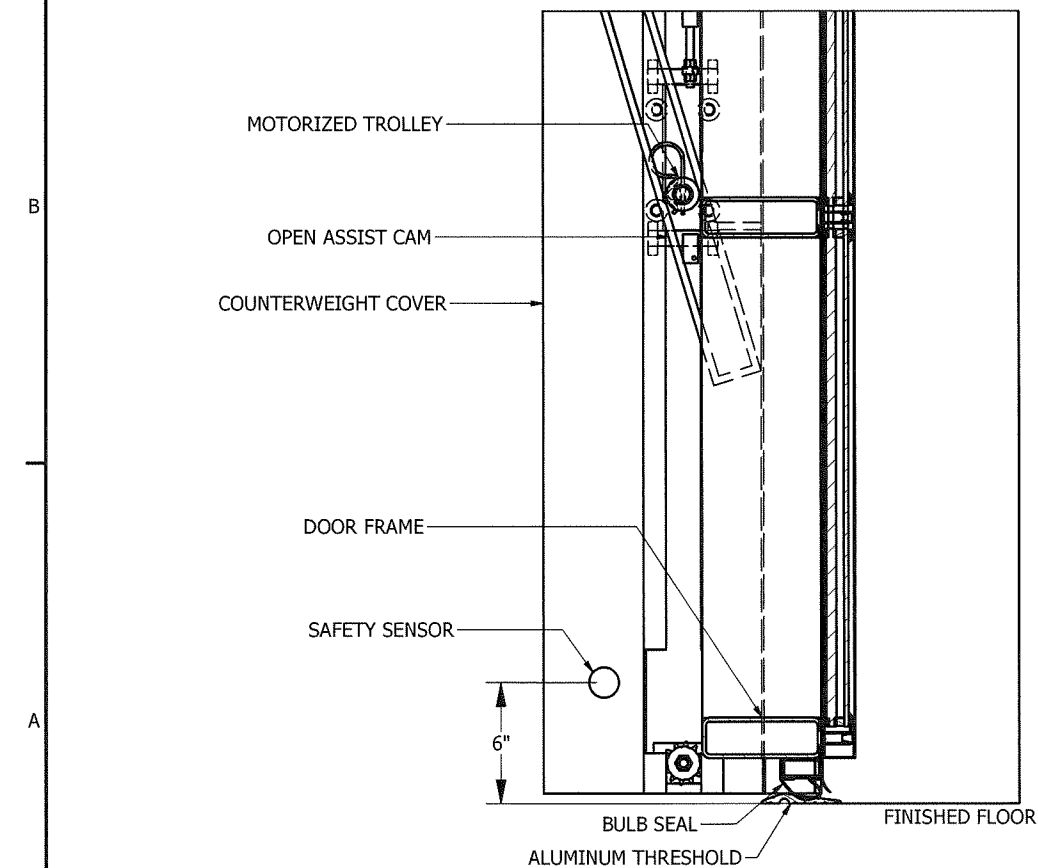
**PRODUCT APPROVED**  
as complying with the Florida  
Building Code  
NOA-No. 20-0526.06  
Approval Date 08/27/2020  
By *[Signature]*  
Miami-Dade Product Control

UNLESS OTHERWISE SPECIFIED DIMENSIONS ARE IN INCHES.  TOLERANCES .X=±.050 .XX=±.015 .XXX=±.005 ANGULAR ±.5°	DRAWN	9/16/2016	RENLITA DOORS NORTH AMERICA, LLC	
	DSF		TITLE	
	CHECKED		S-1000 FLOATAWAY MIAMI-DADE	
	QA		SIZE	DWG NO
	MFG		C	1K-MIAMI
	APPROVED		SCALE 1:1	REV 3
			PAGE 6 OF 11	





01 DOOR HEAD

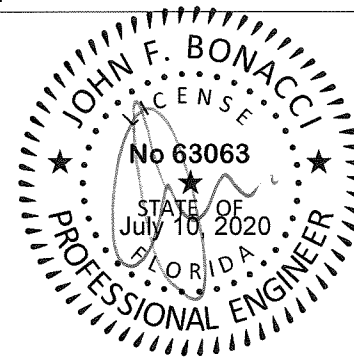


02 DOOR SILL



FL. Cert. of Auth. # 8371  
1626 Ringling Boulevard, Suite 400  
Sarasota, FL 34236  
(941) 927-8525/ Fax (941) 927-8075  
John F Bonacci, PhD, PE  
FL. Registration # 63063

SEAL



**PRODUCT APPROVED**  
as complying with the Florida  
Building Code

NOA-No. 20-0526.06

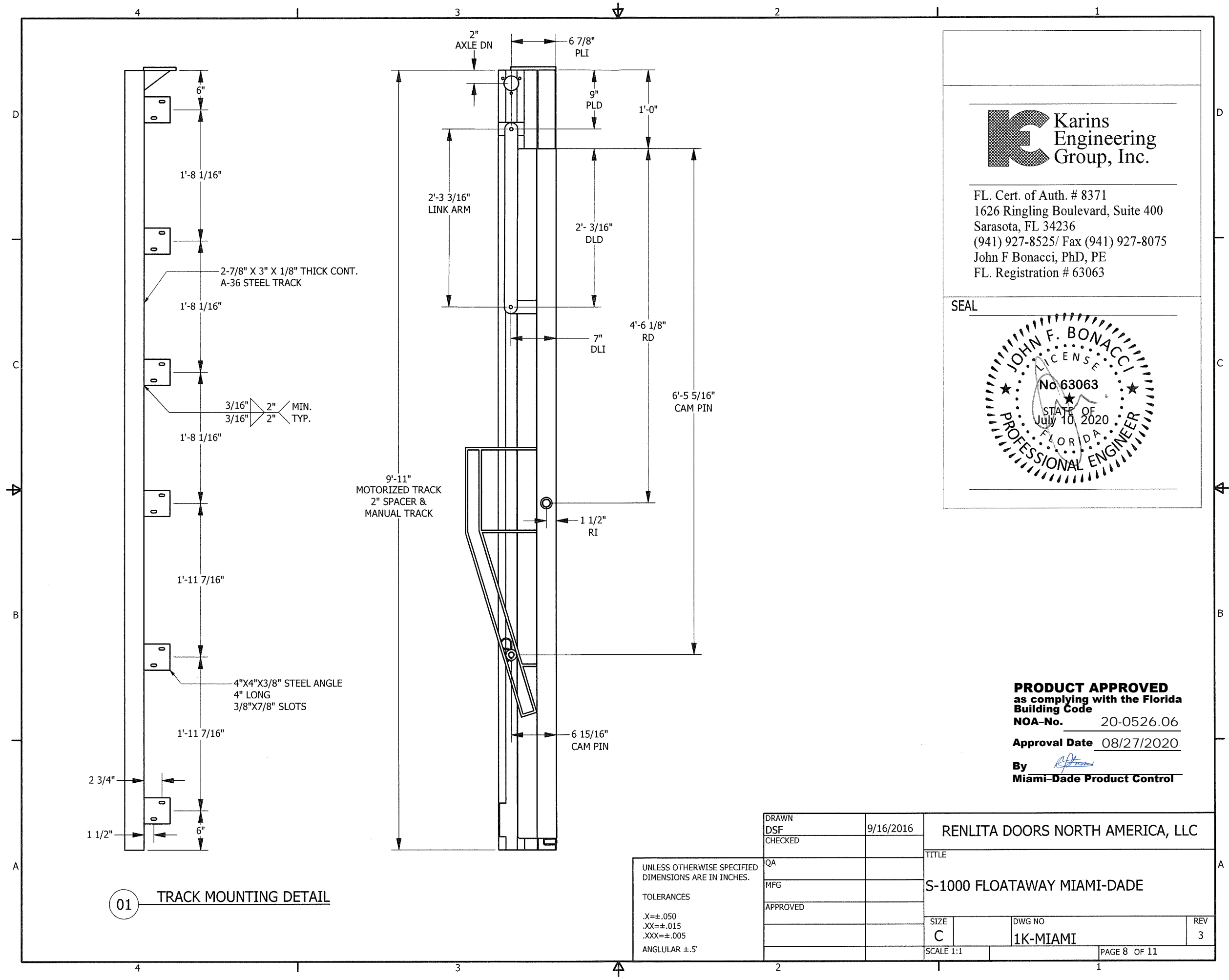
Approval Date 08/27/2020

By *[Signature]*  
Miami-Dade Product Control

UNLESS OTHERWISE SPECIFIED  
DIMENSIONS ARE IN INCHES.

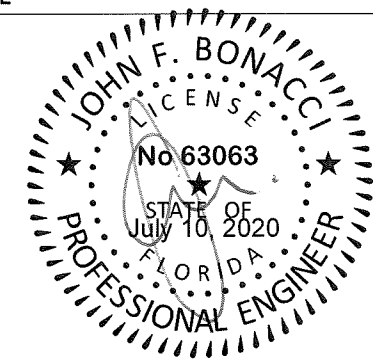
TOLERANCES  
.X=±.050  
.XX=±.015  
.XXX=±.005  
ANGULAR ±.5°

DRAWN	9/16/2016	RENLITA DOORS NORTH AMERICA, LLC	
DSF		TITLE	
CHECKED		S-1000 FLOATAWAY MIAMI-DADE	
QA		SIZE	REV
MFG		C	3
APPROVED		DWG NO	1K-MIAMI
		SCALE 1:1	PAGE 7 OF 11



FL. Cert. of Auth. # 8371  
1626 Ringling Boulevard, Suite 400  
Sarasota, FL 34236  
(941) 927-8525/ Fax (941) 927-8075  
John F Bonacci, PhD, PE  
FL. Registration # 63063

SEAL



**PRODUCT APPROVED**  
as complying with the Florida  
Building Code  
NOA-No. 20-0526.06  
Approval Date 08/27/2020  
By *[Signature]*  
Miami-Dade Product Control

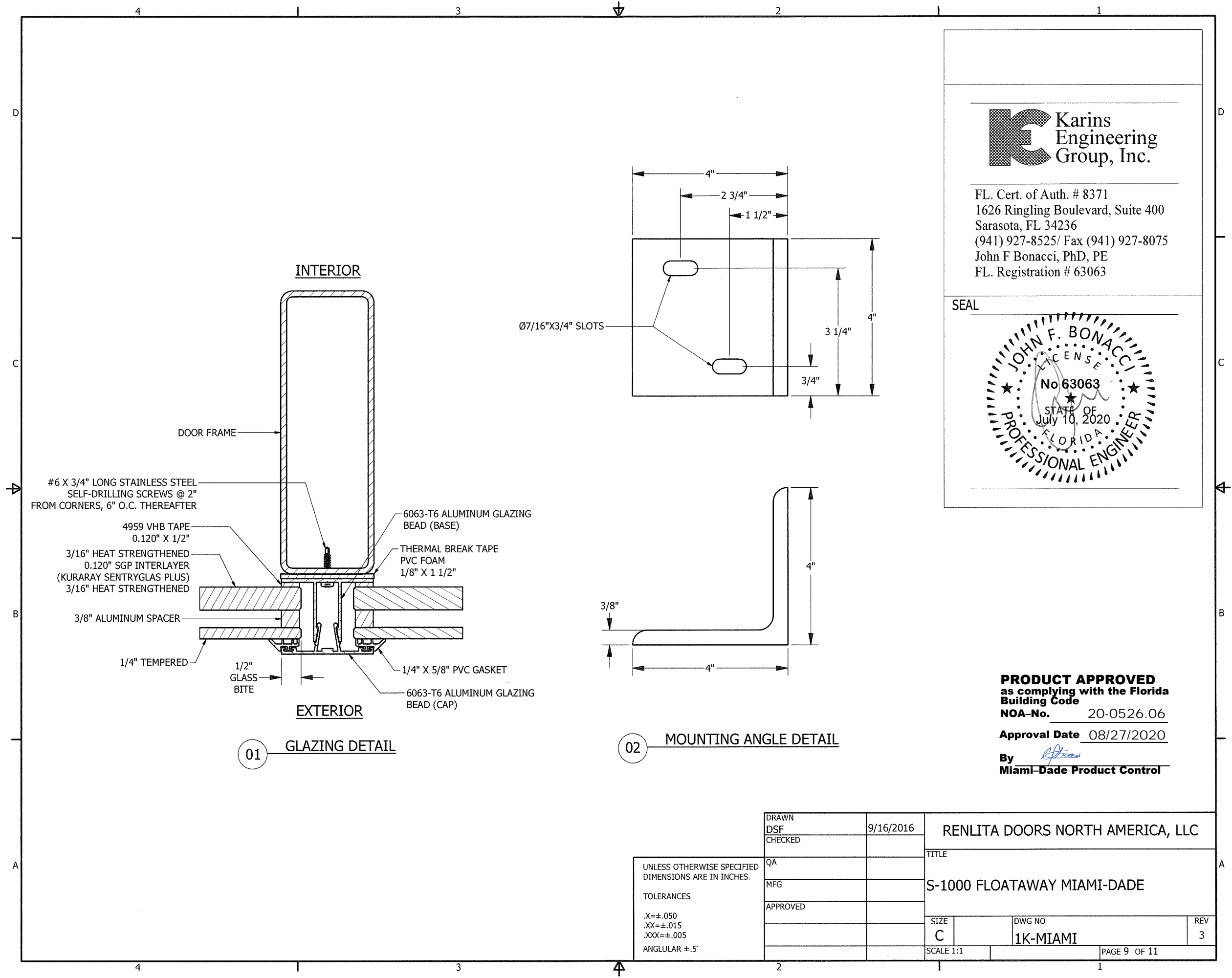
DRAWN	9/16/2016	RENLITA DOORS NORTH AMERICA, LLC		
DSF		TITLE		
CHECKED		S-1000 FLOATAWAY MIAMI-DADE		
QA		SIZE	DWG NO	REV
MFG		C	1K-MIAMI	3
APPROVED		SCALE 1:1	PAGE 8 OF 11	

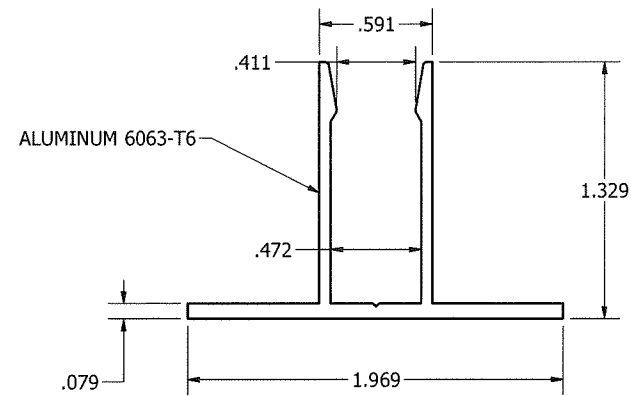
UNLESS OTHERWISE SPECIFIED  
DIMENSIONS ARE IN INCHES.

TOLERANCES

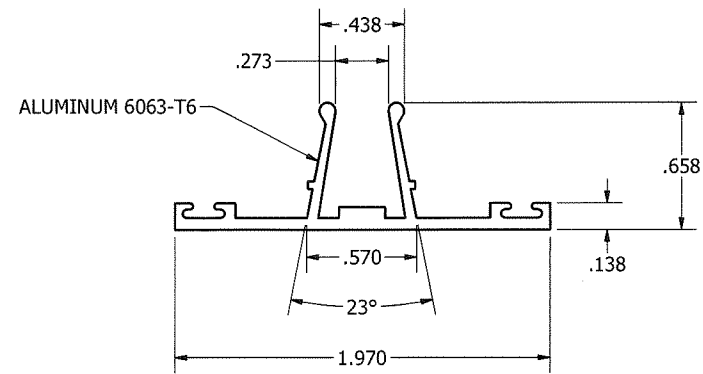
.X=±.050  
.XX=±.015  
.XXX=±.005

ANGULAR ±.5°

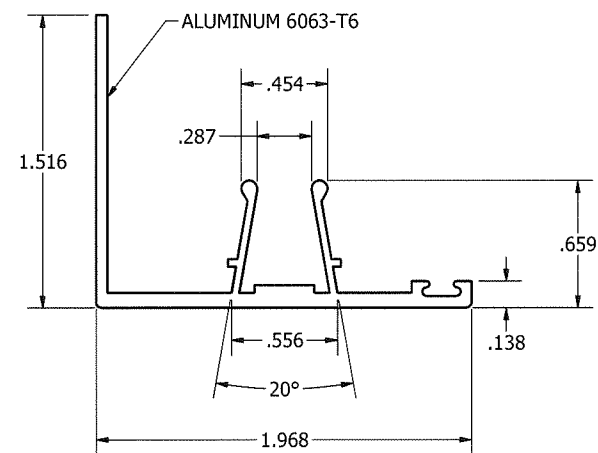




01 GLAZING BEAD (BASE)



02 GLAZING BEAD (CAP)

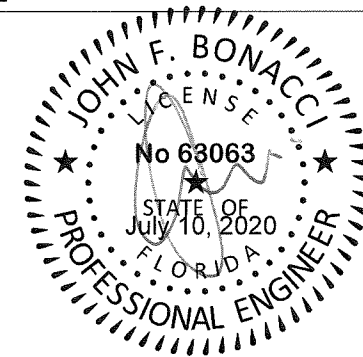


03 GLAZING BEAD (CORNER CAP)



FL. Cert. of Auth. # 8371  
1626 Ringling Boulevard, Suite 400  
Sarasota, FL 34236  
(941) 927-8525/ Fax (941) 927-8075  
John F Bonacci, PhD, PE  
FL. Registration # 63063

SEAL



**PRODUCT APPROVED**  
as complying with the Florida  
Building Code

NOA-No. 20-0526.06

Approval Date 08/27/2020

By *[Signature]*  
Miami-Dade Product Control

UNLESS OTHERWISE SPECIFIED  
DIMENSIONS ARE IN INCHES.

TOLERANCES

.X=±.050

.XX=±.015

.XXX=±.005

ANGULAR ±.5°

DRAWN	DSF	9/16/2016	RENLITA DOORS NORTH AMERICA, LLC	
CHECKED			TITLE	
QA			S-1000 FLOATAWAY MIAMI-DADE	
MFG			SIZE	
APPROVED			DWG NO	
			C	
			1K-MIAMI	
			SCALE 1:1	
			PAGE 10 OF 11	
			REV 3	

